

# How can you remember the different types?

## 1. DEMOGRAPHICS

Young man =  
**testicular**



Older =  
**small cell**



Woman with  
psychiatric sx  
(limbic)= **breast**



# How can you remember the different types?

## 2. DISTRIBUTION



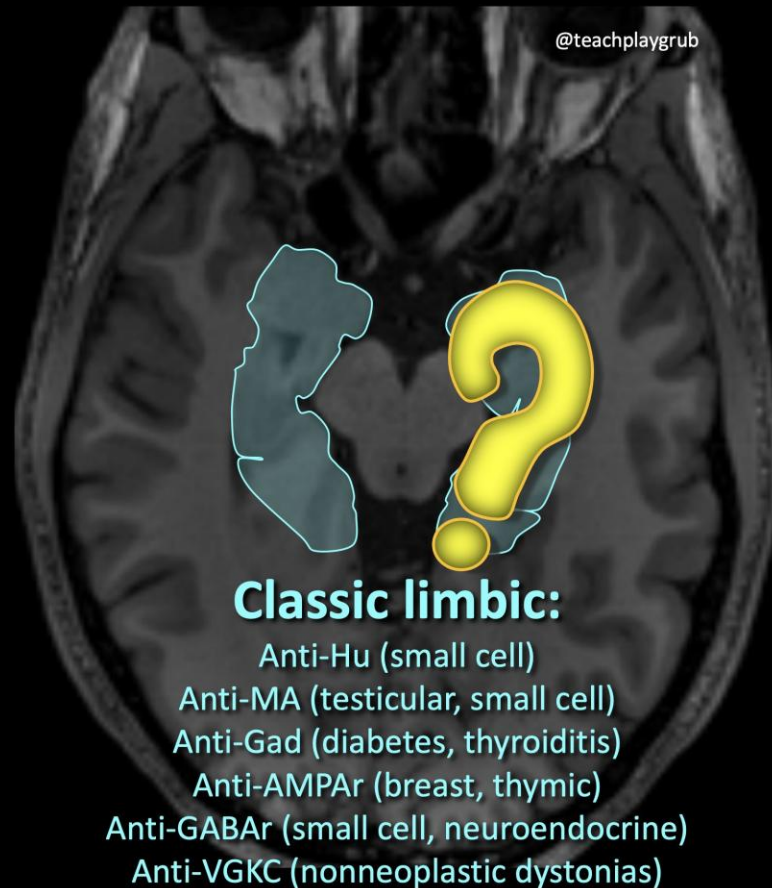
### Limbic

**MANY** different causes

### REMEMBER:

**Distribution**  
looks like a “?”

? = could be a lot of things bc there are so many!



# Multifocal

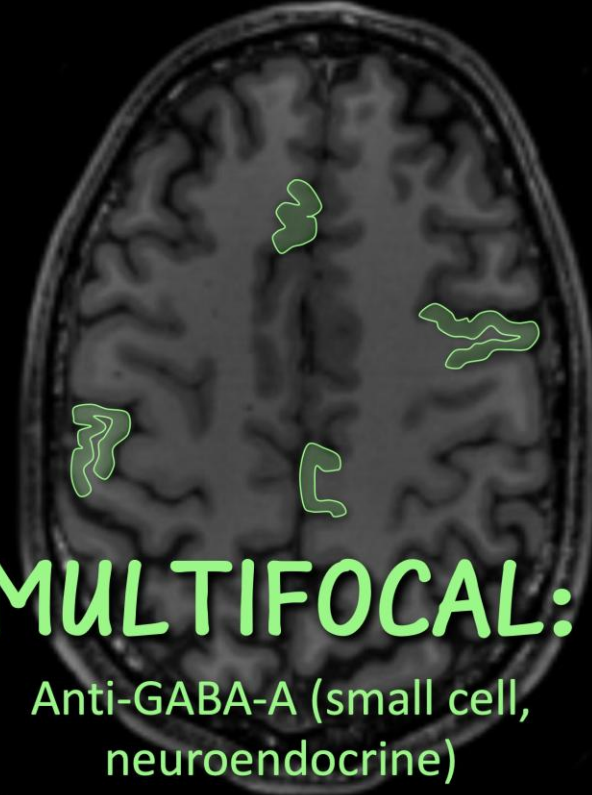
Small cell,  
neuroendocrine

## REMEMBER:

Small cell has multifocal  
mets everywhere—so has  
multifocal encephalitis

## MULTIFOCAL:

Anti-GABA-A (small cell,  
neuroendocrine)



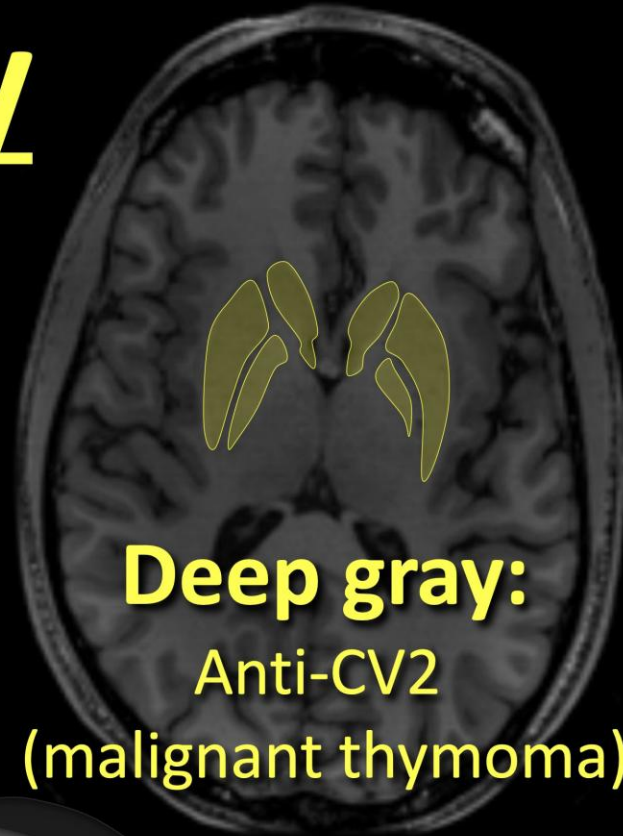


# Deep Gray

Malignant thymoma

## REMEMBER:

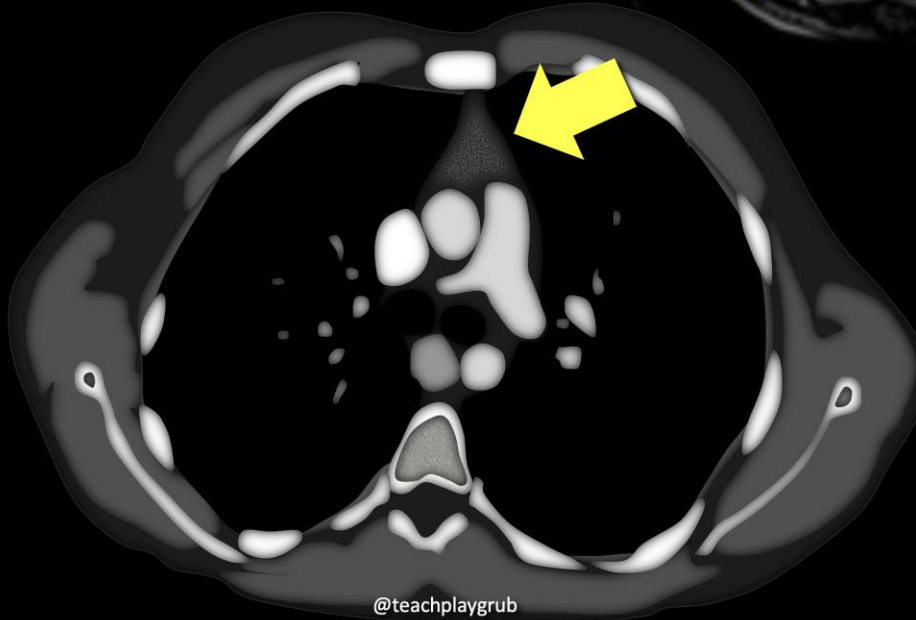
Thymus is located centrally, deep in the mediastinum, so its pattern is central & deep!



**Deep gray:**

Anti-CV2

(malignant thymoma)

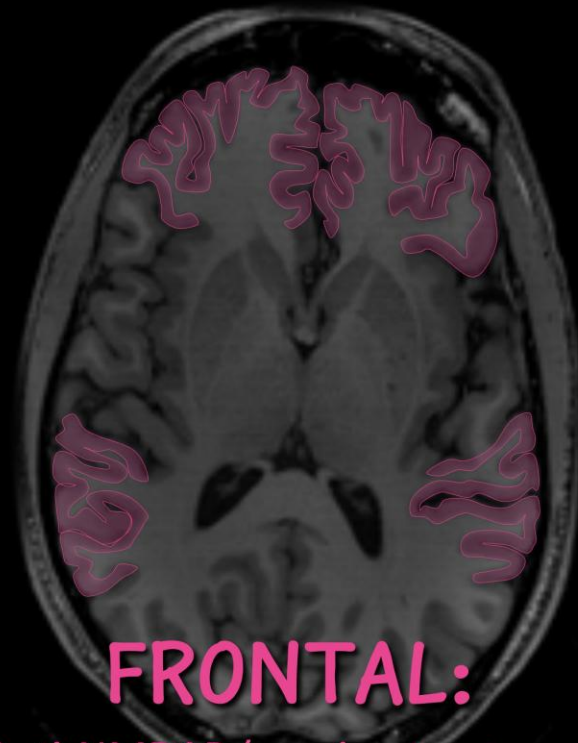


# Frontal

Ovarian teratoma

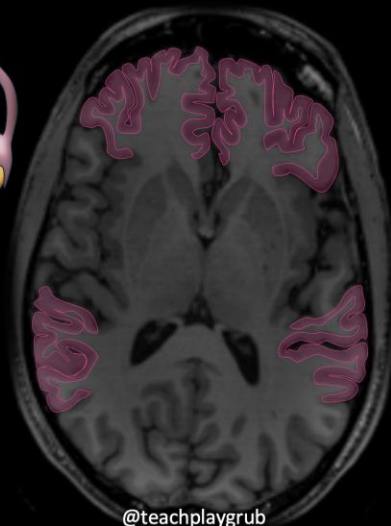
## REMEMBER:

Ovaries are positioned  
on the uterus like the  
frontal lobes on the  
brain



**FRONTAL:**

Anti-NMDAR (ovarian teratoma)

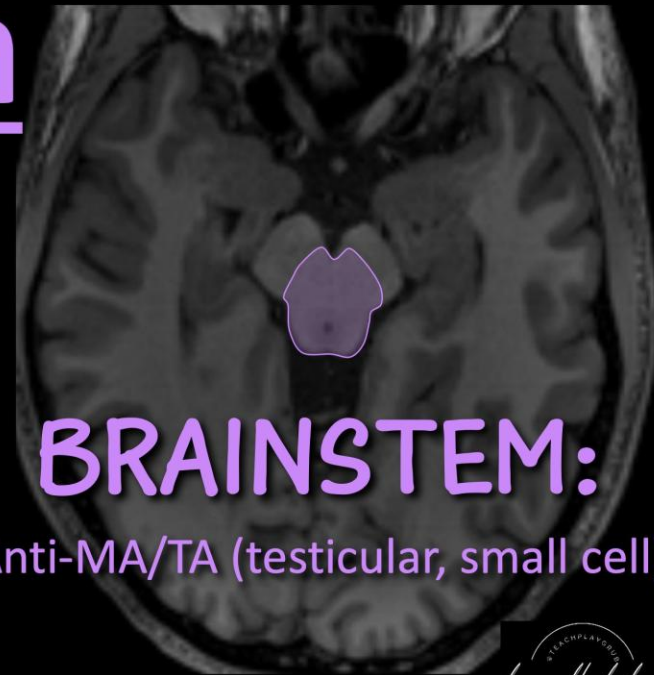


# Brainstem

Testicular

REMEMBER:

Brainstem hangs down  
from the brain just like  
the testicles



**BRAINSTEM:**

Anti-MA/TA (testicular, small cell)

